

7B



DTC Table

CAUTION:
Be sure to perform [Air Conditioning System Check](#) before starting diagnosis.

DTC No. (displayed on SUZUKI scan tool)	DTC (indicated on HVAC control module)		Priority of display	Diagnosis	
	Indicated by "REC" indicator lamp	Indicated by "FRE" indicator lamp			
B1562	1	4	1	Outside air temperature sensor and/or its circuit malfunction	Data error
B1502	2	1	2	Inside air temperature sensor and/or its circuit malfunction	Open
		2	3		Short
B1503	3	1	4	Evaporator temperature sensor and/or its circuit malfunction	Open
		2	5		Short
B1504	4	1	29	Sunload sensor and/or its circuit malfunction	Open
		2	6		Short
B1561	5	4	7	Engine coolant temperature sensor and/or its circuit malfunction	Data error
B1511	6	1	8	Temperature control actuator (position sensor) and/or its circuit malfunction	Open
		2	9		Short
B1513		3	10	Temperature control actuator and/or its circuit malfunction	Lock detect
B1512	7	1	11	Air flow control actuator (position sensor) and/or its circuit malfunction	Open
		2	12		Short
B1514		3	13	Air flow control actuator and/or its circuit malfunction	Lock detect
B1530	8	1	14	Air intake control actuator (position sensor) and/or its circuit malfunction	Open
		2	15		Short
B1531		3	16	Air intake control actuator and/or its circuit malfunction	Lock detect
B1551	9	1	17	Serial communication circuit malfunction	Open
		2	18		Short
B1552		4	19		Data error
B1553	10	4	20	CAN communication circuit malfunction	Data error
B1557	11	4	21	Wheel speed sensor and/or its circuit malfunction	Data error
B1556	12	4	22	Camshaft position (CMP) sensor and/or its circuit malfunction	Data error
B1563	13	4	23	A/C refrigerant pressure sensor and/or its circuit malfunction	Data error
		5	24	A/C refrigerant pressure sensor malfunction	Refrigerant pressure malfunction
B1520	15	1	25	Temperature selector malfunction	Open
		2	26		Short
B1521	16	1	27	Blower speed selector malfunction	Open

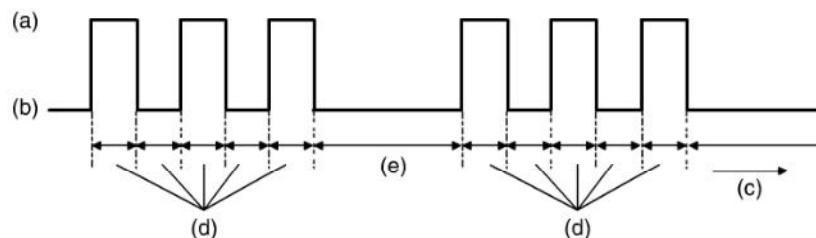
	2	28	Short
—	See NOTE below	—	Normal

NOTE:

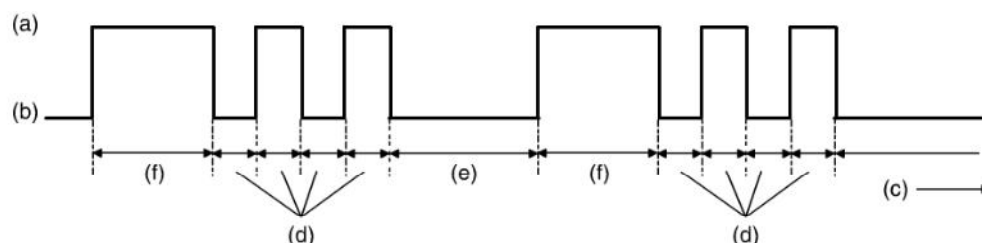
When no abnormality is detected, "FRE" indicator lamp and "REC" indicator lamp repeat cycle of ON for 2 seconds and OFF for 1 second.

Example of "REC" Indicator Lamp Flashing Pattern

[A]



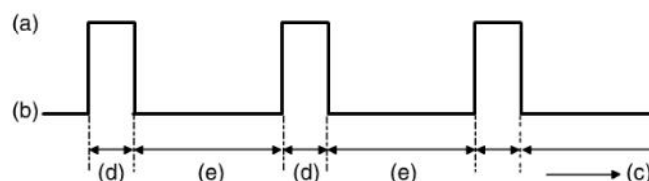
[B]



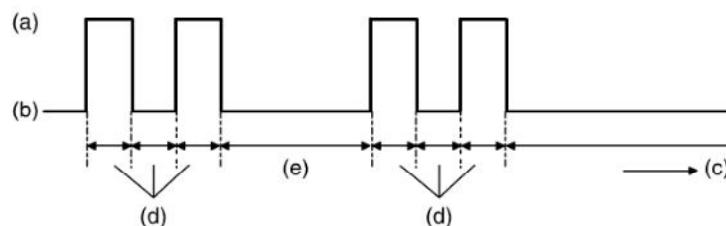
[A]:	B1503 (No.3)	(b):	"REC" indicator lamp "OFF"	(e):	2.0 (sec.)
[B]:	B1556 (No.12)	(c):	Time (sec.)	(f):	1.5 (sec.)
(a):	"REC" indicator lamp "ON"	(d):	0.5 (sec.)		

Example of "FRE" Indicator Lamp Flashing Pattern

[A]



[B]



--	--	--	--	--	--

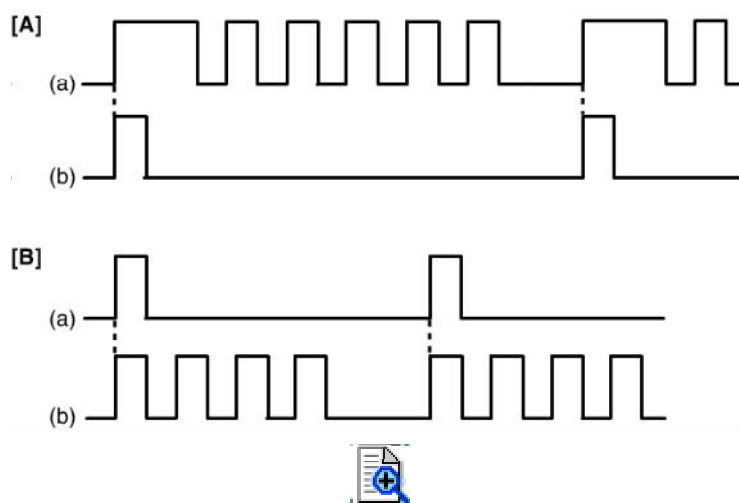
[A]:	Open	(b):	"FRE" indicator lamp "OFF"	(e):	2.0 (sec.)
[B]:	Short	(c):	Time (sec.)		
(a):	"FRE" indicator lamp "ON"	(d):	0.5 (sec.)		

NOTE:

Locked actuator, data error and refrigerant pressure malfunction are indicated by flashing pattern of "FRE" indicator lamp specified for each of them.

Display Timing of "FRE" Indicator Lamp and "REC" Indicator Lamp

Code with short display time waits until display of code with long display time is over.



[A]:	B1520 (15 – 1)	(a):	"REC" indicator flashing pattern
[B]:	B1562 (1 – 4)	(b):	"FRE" indicator flashing pattern