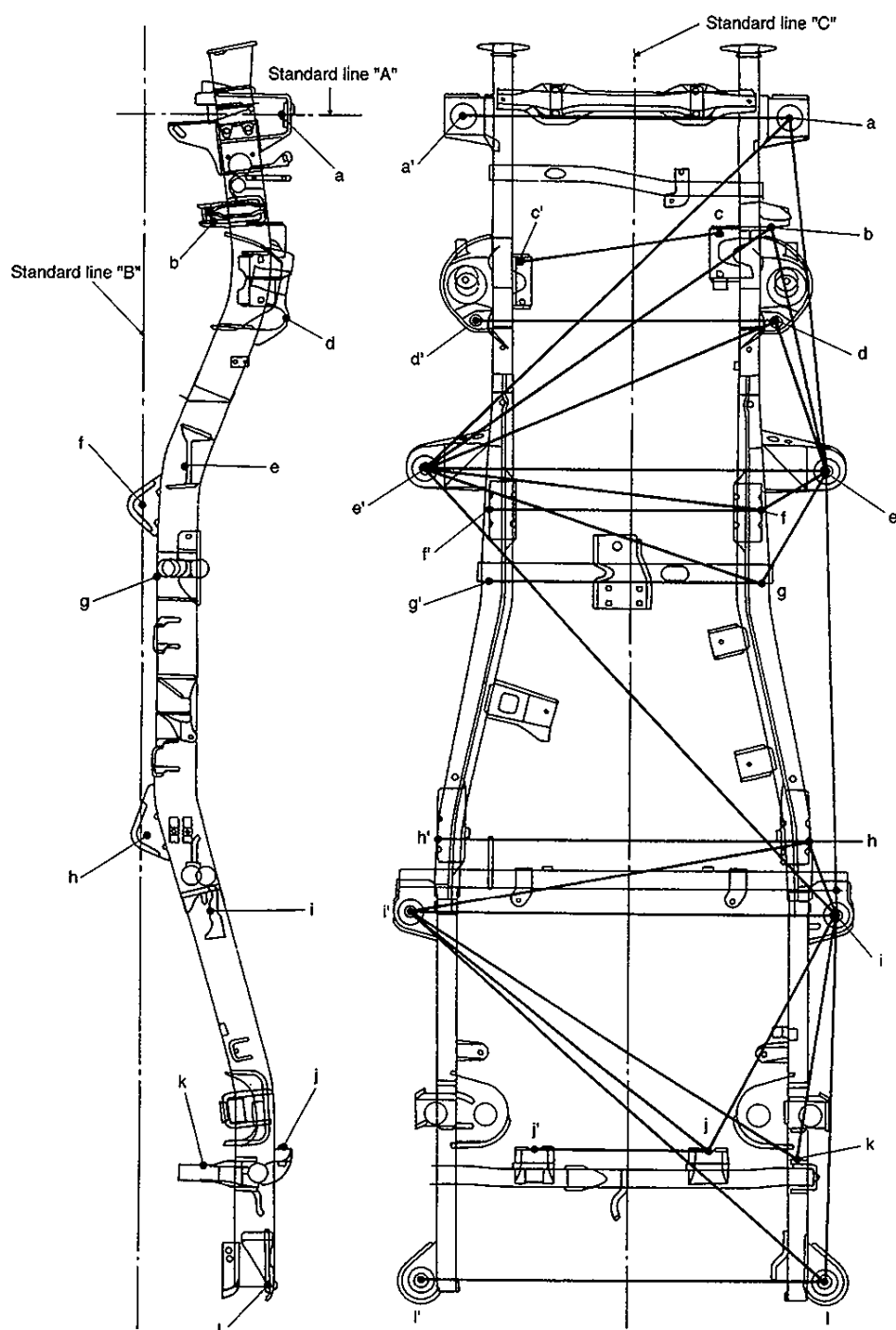


UNDER BODY DIMENSIONS



a, a' 1st mounting installation hole
b Lateral rod rear section installation hole
c, c' Engine mounting installation hole
d, d' Front shock absorber installation
e, e' 2nd mounting installation
f, f' Front suspension arm installation hole

g, g' Zig hole
h, h' Rear suspension arm installation hole
i, i' 3rd mounting installation hole
j, j' Rear shock absorber installation hole
k Lateral rod front section installation hole
l, l' 4th mounting installation hole

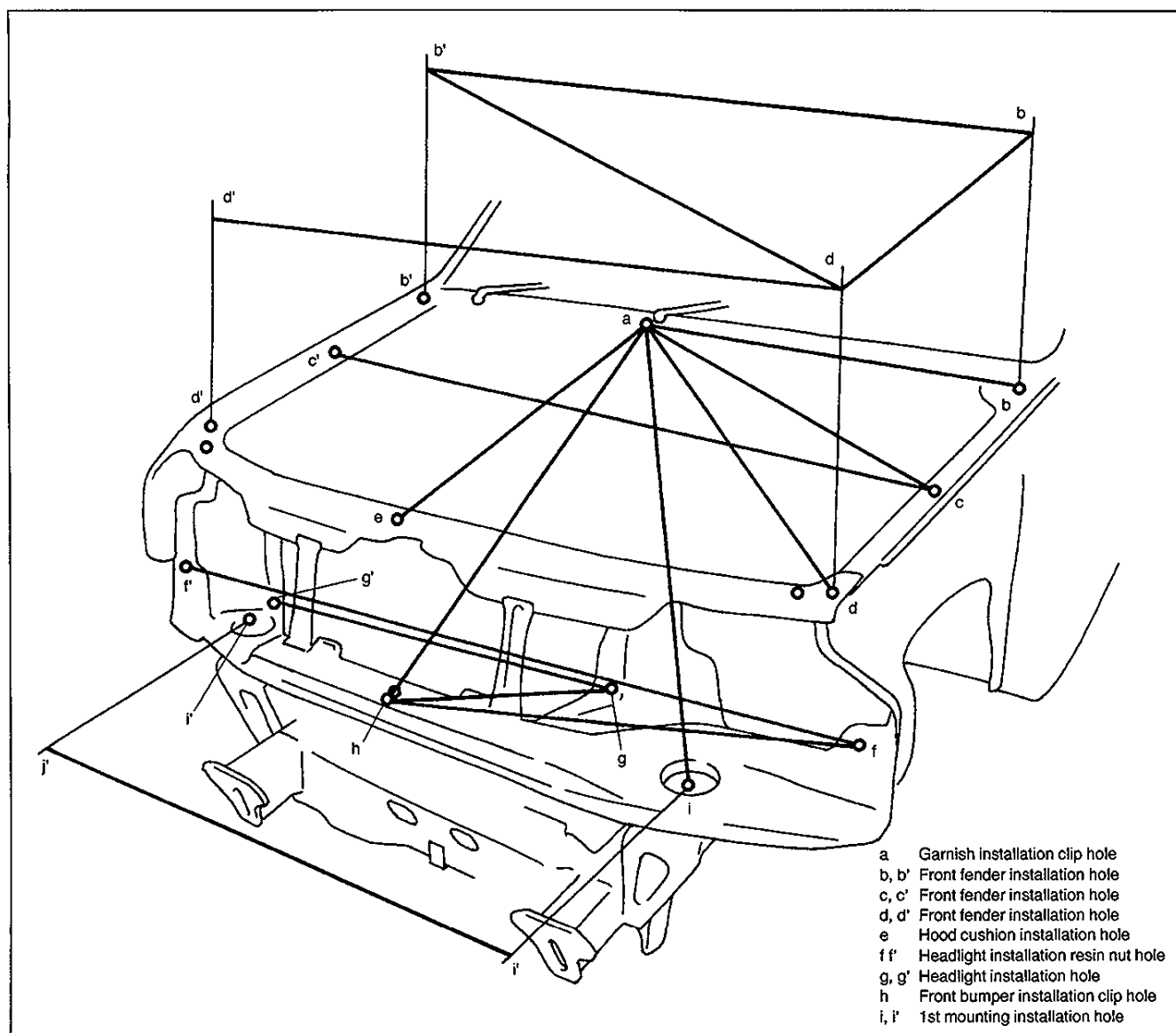
Projection Dimension

Measurement Position	Length from line "A" mm (in.)	Length from line "B" mm (in.)	Length from line "C" mm(in.)
a	0 (0)	368 (14.49)	425 (16.73)
b	285 (11.22)	156 (6.14)	397 (15.63)
c	302 (11.89)	335 (13.19)	241 (9.49)
d	532 (20.94)	368 (14.49)	390 (15.35)
e	920 (36.22)	113 (4.45)	520 (20.47)
f	1025 (40.35)	0 (0)	356 (14.02)
g	1215 (47.83)	36 (1.42)	355 (13.98)
h	1900 (74.80)	16 (0.63)	481 (18.94)
i	2098 (82.60)	182 (7.17)	553 (21.78)
j	2719 (107.05)	370 (14.57)	226 (8.90)
k	2765 (108.86)	101 (3.98)	481 (18.94)
l	3065 (120.67)	325 (12.80)	523 (20.59)

Measurement Dimension

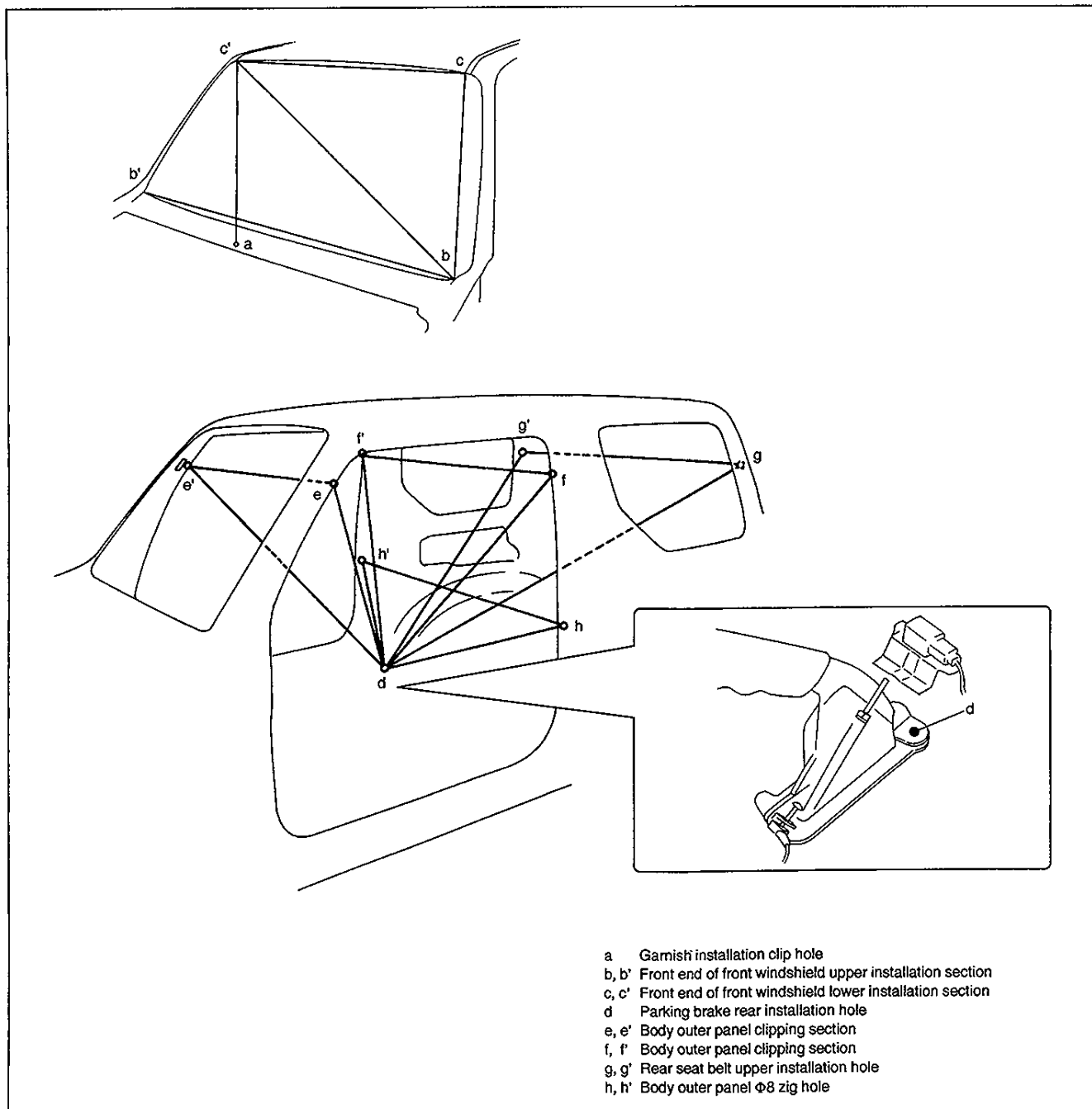
Measurement Position	Length mm (in.)	Measurement Position	Length mm(in.)
a - a'	850 (33.46)	g - e'	927 (36.50)
a - e'	1343 (52.87)	g - g'	710 (27.95)
a - e	960 (37.80)	h - h'	962 (37.87)
b - e'	117 (4.61)	h - i'	1066 (41.97)
b - e	649 (25.55)	h - i	268 (10.55)
c - c'	515 (20.28)	i - i'	1106 (43.54)
d - d'	780 (30.71)	i - j	727 (28.62)
d - e'	1022 (40.24)	i - k	676 (26.61)
d - e	482 (18.98)	i - e	978 (38.50)
e - e'	1040 (40.94)	j - i'	1014 (39.92)
e - f	225 (8.86)	k - i'	1233 (48.54)
e - g	347 (13.66)	j - j'	452 (17.80)
e - i	1181 (46.50)	l - i	1454 (57.24)
f - e'	889 (35.00)	l - i'	1064 (41.90)

BODY DIMENSIONS



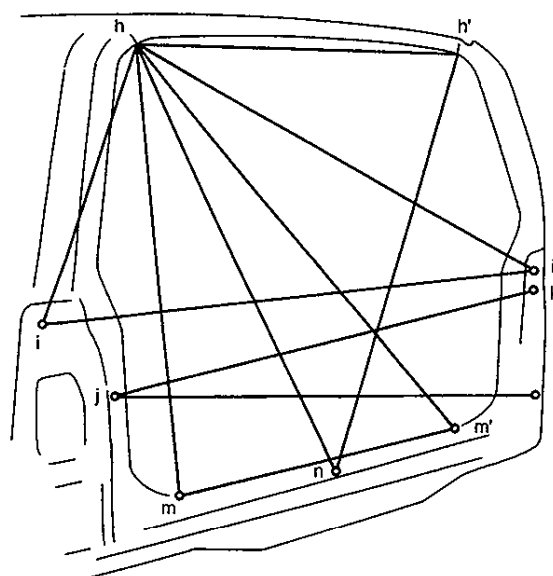
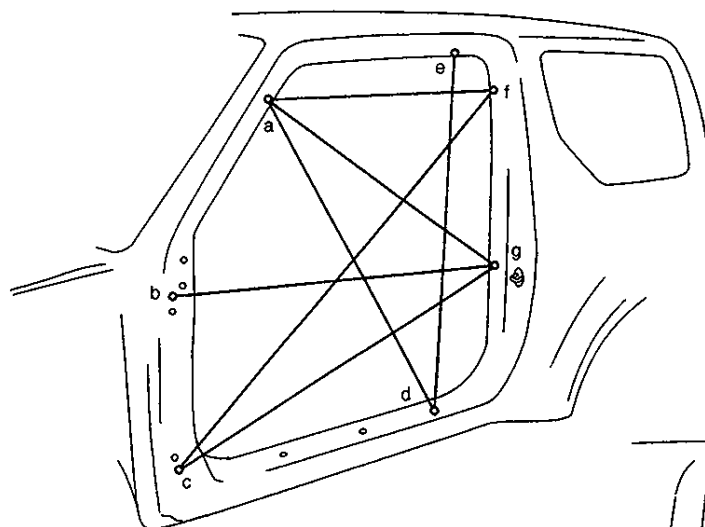
Measurement Dimension

Measurement Position	Length mm (in.)	Measurement Position	Length mm (in.)
a - b	660 (25.98)	c - c'	1222 (48.11)
a - c	664 (26.14)	d - b'	1166 (45.90)
a - d	833 (32.80)	d - d'	1393 (54.84)
a - i'	890 (35.04)	f - f'	1266 (49.84)
a - h	837 (32.95)	f - h	661 (26.02)
a - e	667 (26.26)	g - g'	654 (25.75)
b - b'	1266 (49.84)	g - h	351 (13.82)
b - d	681 (26.81)	i - i'	850 (33.46)



Measurement Dimension

Measurement Position	Length mm (in.)	Measurement Position	Length mm (in.)
a - c'	902 (35.51)	d - g	1479 (58.23)
b - b'	1190 (46.85)	d - g'	1514 (59.61)
b - c	620 (24.41)	d - h	718 (28.27)
b - c'	1240 (48.82)	d - h'	795 (31.30)
c - c'	969 (38.15)	e - e'	1102 (43.39)
d - e	1179 (46.42)	f - f'	1127 (44.37)
d - e'	1221 (48.07)	g - g'	1103 (43.43)
d - f	1063 (41.85)	h - h'	1254 (49.37)
d - f'	1111 (43.74)		



- a Body outer panel clipping section
- b Front door upper hinge in upper installation hole
- c Front door lower hinge in lower installation hole
- d Side sill scuff installation hole (rear end)
- e Body outer panel $\Phi 8$ zig hole
- f Body outer panel clipping section
- g Body outer panel $\Phi 8$ zig hole
- h, h' Rear end of roof panel upper installation section
- i, i' Combination lamp upper installation hole
- j Back door striker upper installation hole
- k Back door upper hinge in upper installation hole
- l Back door lower hinge in lower installation hole
- m, m' Rear end of pillar outer panel inside installation section
- n Rear bumper installation hole

Measurement Dimension

Measurement Position	Length mm (in.)	Measurement Position	Length mm(in.)
a - d	1094 (43.07)	h - i'	1186 (46.69)
a - f	683 (26.89)	h - m	896 (35.28)
a - g	861 (33.90)	h - m'	1224 (48.19)
b - g	1099 (43.27)	h - n	1024 (40.31)
c - f	1428 (56.22)	i - i'	1297 (51.06)
c - g	1162 (45.75)	j - k	1136 (44.72)
d - e	1074 (42.28)	j - l	1160 (45.67)
h - h'	867 (34.13)	m - m'	804 (31.65)
h - i	540 (21.26)	n - n'	1033 (40.67)