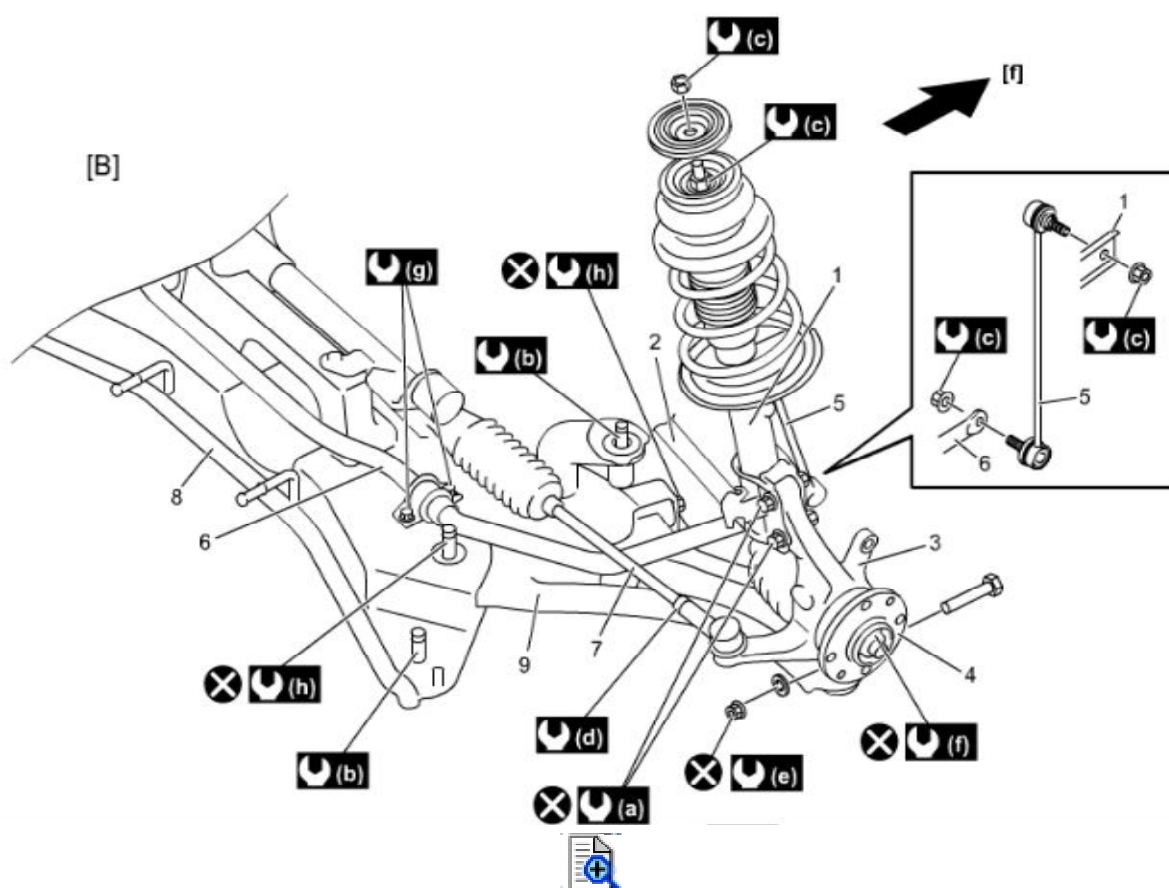
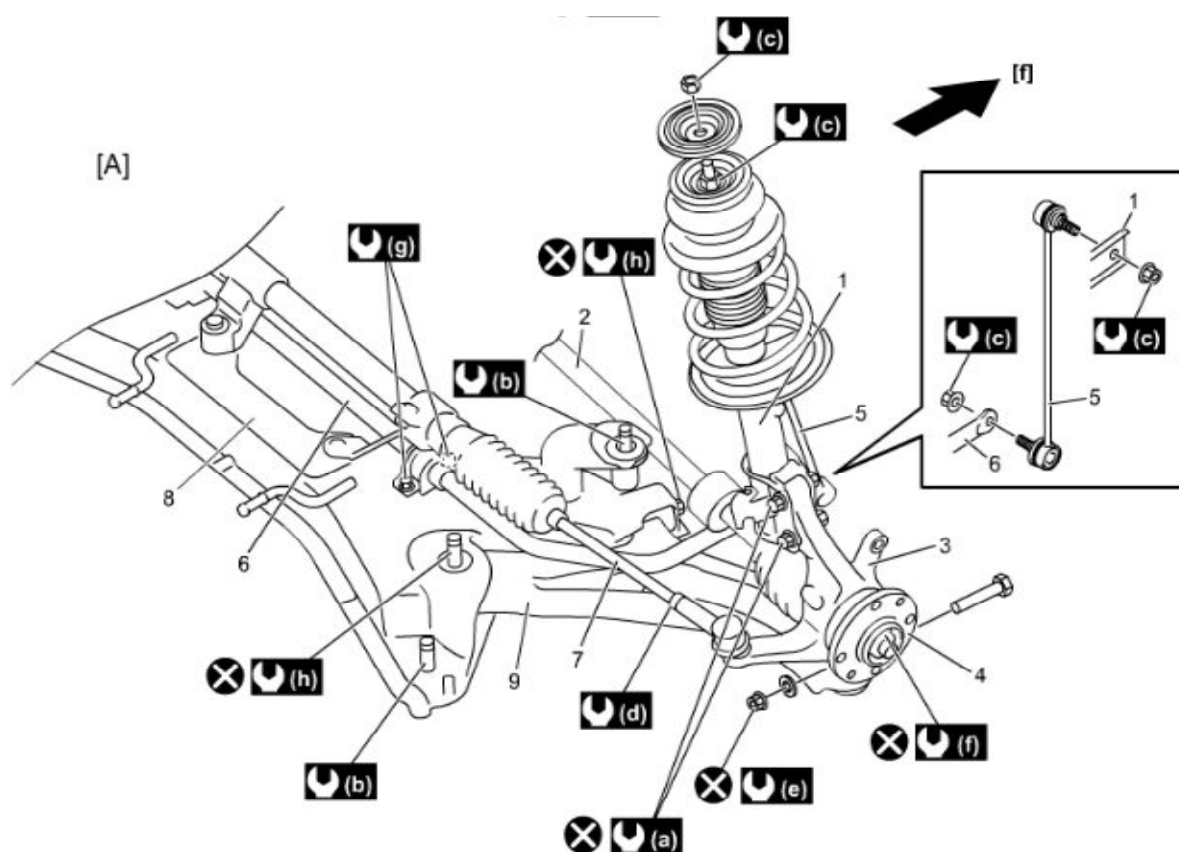











2B

Front Suspension Construction



[A]: Petrol engine model	6. Stabilizer bar	 (d): 45 N·m (4.6 kgf-m, 33.5 lbf-ft)
[B]: Diesel engine model	7. Tie-rod	 (e): 60 N·m (6.1 kgf-m, 44.5 lbf-ft)
1. Front strut assembly	8. Front suspension frame	 (f): 175 N·m (17.8 kgf-m, 129.5 lbf-ft)
2. Front drive shaft	9. Suspension arm	 (g): 23 N·m (2.3 kgf-m, 17.0 lbf-ft)
3. Steering knuckle	 (a): 90 N·m (9.2 kgf-m, 66.5 lbf-ft)	 (h): 95 N·m (9.7 kgf-m, 70.5 lbf-ft)
4. Front wheel hub	 (b): 150 N·m (15.3 kgf-m, 111.0 lbf-ft)	 : Do not reuse.
5. Stabilizer joint	 (c): 50 N·m (5.1 kgf-m, 37.0 lbf-ft)	[f]: Forward